

# Supply Chain

*Collect and manage sustainability data through your supply chain*

The supply chain is the new frontier for sustainable business. Once your processes are in place, the next major source of sustainability risk and opportunity is your supply chain. You need to know where your products and services are coming from, and you need to be confident that the third parties involved in this sourcing understand and adhere to your principles.

The challenge is that supply chains are large and dynamic. Suppliers drop in and out, and each supplier will in turn have its own suppliers. Managing a programme to collect data from your supply chain can place a huge burden on your internal resources.

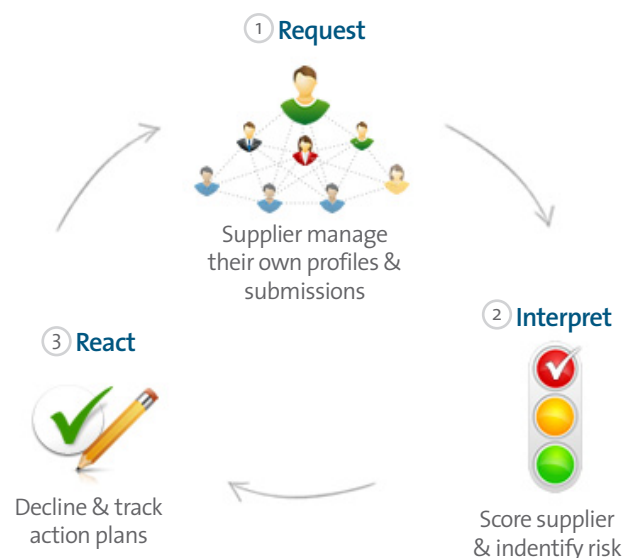
## Our Solution

Our Supply Chain solution provides distribution, timeline management and receipt of virtually any type of questionnaire that will be distributed through a supply chain. The solution is used by the likes of Novo Nordisk to gather information from tens of thousands of suppliers and their products to manage:

- Supplier Compliance (code of conduct)
- Supplier Audits (external auditing)
- Supplier Performance Data (carbon footprint)
- Performance Improvement (Corrective Action management)
- Supplier communication (email blasts)
- Product based compliance through the supply chain to source

### Key features and benefits

- Collect all types of information from your suppliers, from code of conduct surveys to performance metrics for scope 3 reporting
- Significantly reduce the cost and complexity of collecting information from large and dynamic supply chains
- Identify risk in the supply chain and manage/document the required corrective steps
- Summarise performance back to suppliers on intuitive dashboards to drive improvement



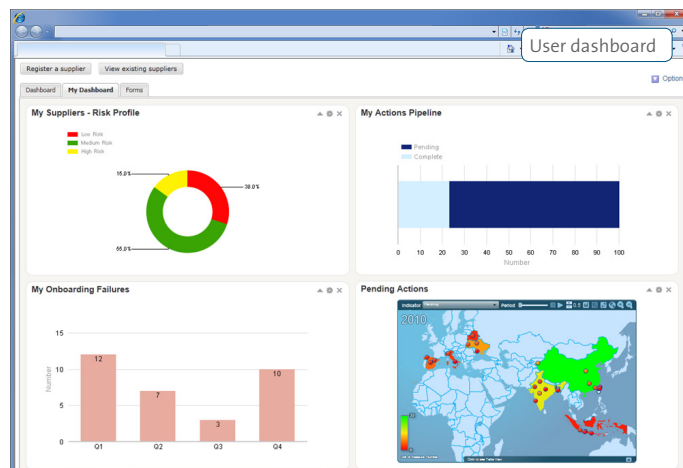
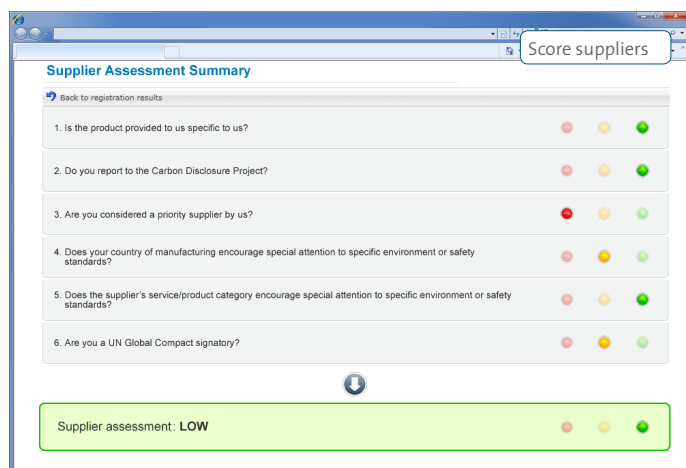
credit360 is a web based sustainability data management solution which provides your users with quick and intuitive access to a central system wherever they are in the business. Supply Chain is just one aspect of the credit360 system. Our clients can incrementally build a single system to manage all of their sustainability issues in a single integrated platform, from Supply Chain to Compliance.



# A closer look at Supply Chain

## How do I collect the information?

- The system is designed to allow thousands of suppliers to self-manage their own company details and questionnaire responses without the need for time consuming administrative overhead. You simply invite a supplier or group of suppliers, they create their own profiles and respond to the questionnaires you have assigned them.
- Workflows are driven with automated emails and summary dashboards for each user to highlight their required 'actions'.
- Users are guided through intuitive online wizards to simplify the whole process
- Approval steps ensure information is quality checked

**Supplier Assessment Summary**

Back to registration results

1. Is the product provided to us specific to us? ● ● ●
2. Do you report to the Carbon Disclosure Project? ● ● ●
3. Are you considered a priority supplier by us? ● ● ●
4. Does your country of manufacturing encourage special attention to specific environment or safety standards? ● ● ●
5. Does the supplier's service/product category encourage special attention to specific environment or safety standards? ● ● ●
6. Are you a UN Global Compact signatory? ● ● ●

↓

Supplier assessment: **LOW** ● ● ●

## What reporting & management tools will I get?

- Create a central store of product/supplier certifications and compliance statuses
- Apply your custom scoring methodology to rate or risk categorise suppliers
- View simplified scorecards which can be shared with suppliers
- Calculate supplier level impacts for any KPI of interest (e.g. water, carbon) and aggregate this up to give a total supply chain footprint
- Assign corrective actions and improvement plans and keep a record of activity and communications with each supplier

## What about the suppliers of my suppliers?

The Supply Chain solution is designed to help you drill down through the tiers of your supply chain whilst minimising the associated administrative burden. Your suppliers can invite their suppliers, who will then create their own profiles and respond to the relevant questionnaires. A network of suppliers will be created to ensure one company doesn't have to duplicate a submission if they supply to multiple organisations along the supply chain.

The Rainforest Alliance Smart Source programme uses credit360 to help member companies drill down through their supply chains and collect component level compliance information for wood products.

Supply Chain is just one aspect of the credit360 system. Our clients can incrementally build a single system to manage all of their sustainability issues in a single integrated platform, from Supply Chain to Compliance.

