

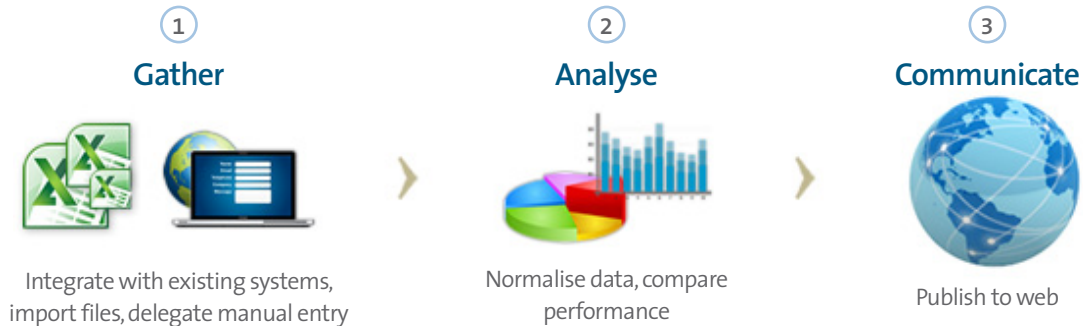
# Corporate Social Responsibility

*Gather, analyse and communicate all of your non-financial information in one place*

Bringing together complex data in a robust system, meeting both internal and external reporting needs, or engaging your various stakeholders: corporate responsibility can be a powerful tool for your organisation, but it can also be a headache for the people responsible for pulling it together.

## Our Solution

Our CSR solution makes it easy to collect reliable data across your whole organisation, whether you collect data centrally, or delegate it worldwide. We help companies like Yara, Westpac and Aviva gather and analyse data for their annual CSR/Sustainability reports and meet a range of external requirements including the **Global Reporting Initiative (GRI) G3, DJSI and UN Global Compact**.



## Key features and benefits

- Intuitive and user friendly system to simplify data collection
- Quality checks on data to ensure you are getting reliable information
- A full audit trail to support external assurance for your CSR reporting
- Flexible reporting tools like customisable charts and tables allow you to view your data the way you want to, and even export reports to your website

**56,000**  
community involvement activities  
tracked across 30 countries

*“Credit360 has revolutionised the way we disclose CR information. Our stakeholders can now access the very latest data direct on our website dashboard ([www.mansustainability.com](http://www.mansustainability.com))”*

Jonathan Ellwood  
Corporate Responsibility Manager  
Man Group



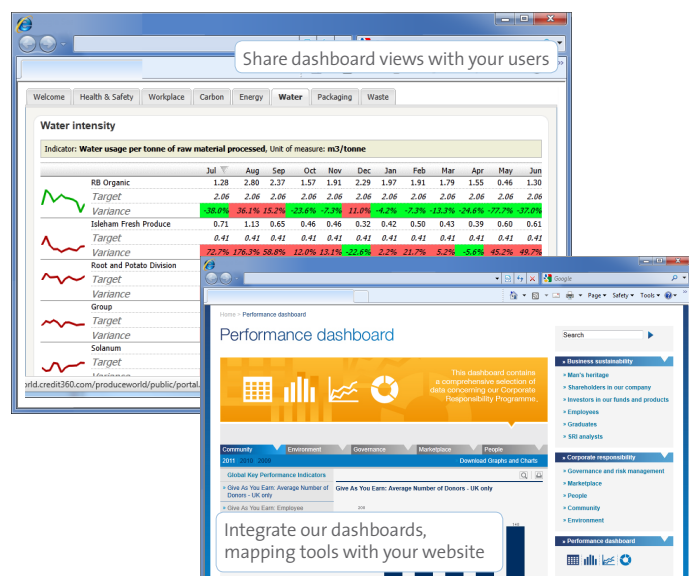
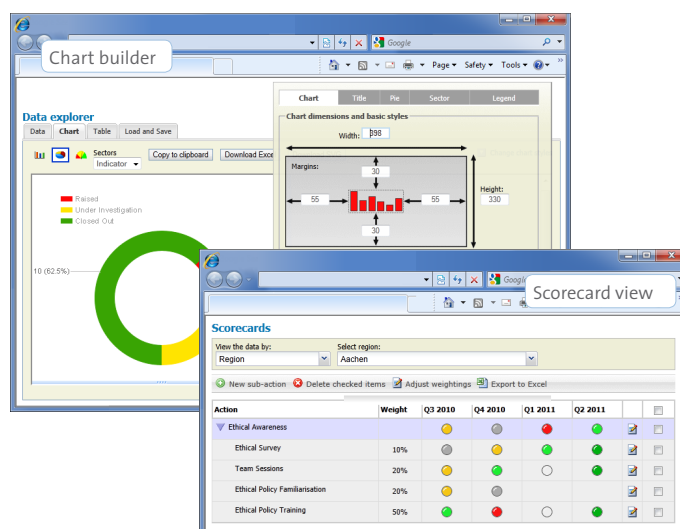
credit360 is a web based sustainability data management solution which provides your users with quick and intuitive access to a central system wherever they are in the business. Corporate Social Responsibility is just one aspect of the credit360 system. Our clients can incrementally build a single system to manage all of their sustainability issues in a single integrated platform, from Corporate Social Responsibility to Energy & Carbon.



# A closer look at Corporate Social Responsibility

## How do I collect the information?

- Integrate with existing systems or even pull data straight from third parties, streamlining & automating data collection wherever possible
- Delegate online forms and collect data with approval steps
- Import data from MS Excel
- A full audit trail is kept in the system which makes third party assurance more robust and less complicated.



## What reporting & management tools will I get?

- 'Drag and drop' chart builder (with your colours and fonts applied by default)
- Excel exports to get large amounts of data out of the system
- PDF and MS Word report templates
- Dashboard views of performance against targets
- Scorecard view to distil complex performance data into simplified traffic light overviews
- Interactive maps to view information spatially

## How do I communicate performance?

Corporate Responsibility is about more than collecting and sitting on data, it's about sharing it with your stakeholders in a transparent manner. We take our clients beyond the first hurdle of data collection and give them tools to support their (award winning) reporting:

- Export print quality, branded images
- Configure and share dashboard views with your users
- Automatically export charts directly to your intranet or corporate website
- Integrate our dashboards, mapping tools and more with your website

Corporate Social Responsibility is just one aspect of the credit360 system. Our clients can incrementally build a single system to manage all of their sustainability issues in a single integrated platform, from Corporate Social Responsibility to Energy & Carbon.

